

Kinetic Areas Trauma Training



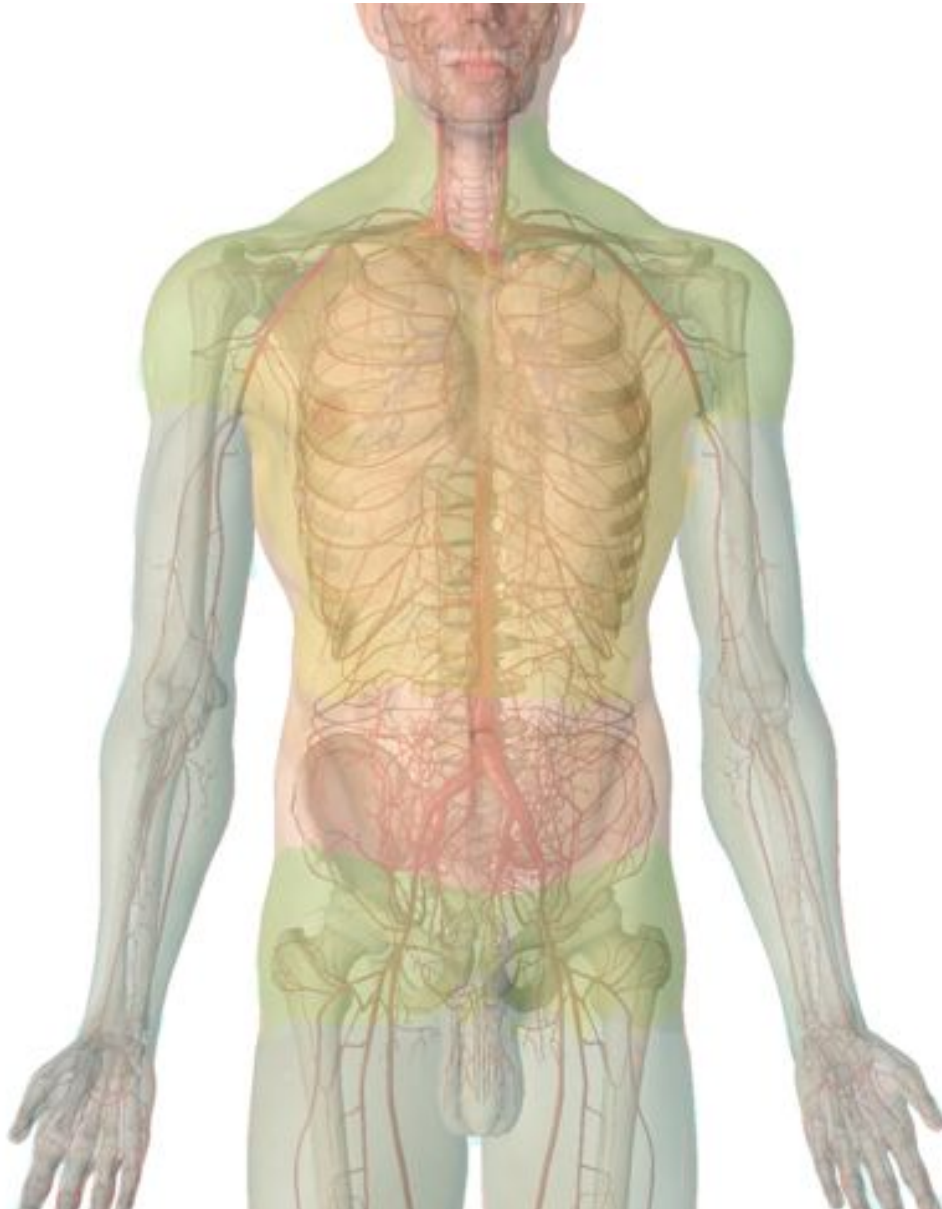
Casualty Management

- Stop and Assess the Situation
 - Danger- you, others, casualty
 - History – Mechanisms of Injury
- Assess the Casualty
 - Primary Survey
 - Blood Sweep/injury check
- Work in Priority
 - Danger
 - Response levels [AVPU]
 - Catastrophic bleeding
 - Airway
 - Breathing
- The most important assessment is the Re-Assessment

Primary Survey

- Remember **SAFETY FIRST**
 - 1- my safety
 - 2- anyone uninjured
 - 3- the casualty
 - **D**anger- Is it safe enough to help?
 - **R**esponse - Can they talk/help themselves?
 - **C**atastrophic bleeding? Arms/legs/neck/flanks
 - **A**irway?- can they maintain? can you provide?
 - **B**reathing? 2 in 10- is it good breathing?

Massive bleeding



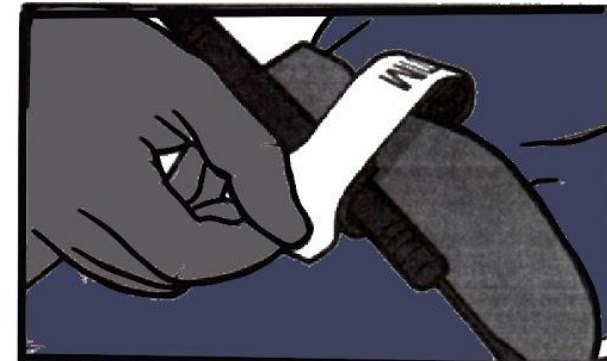
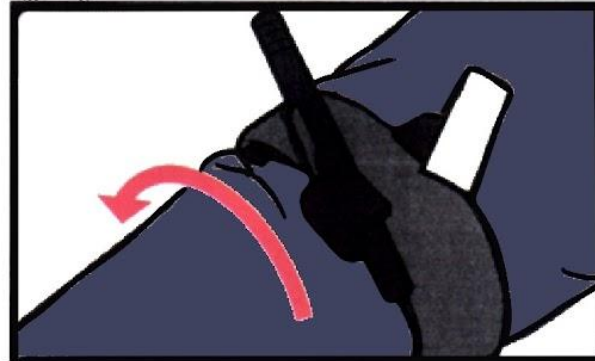
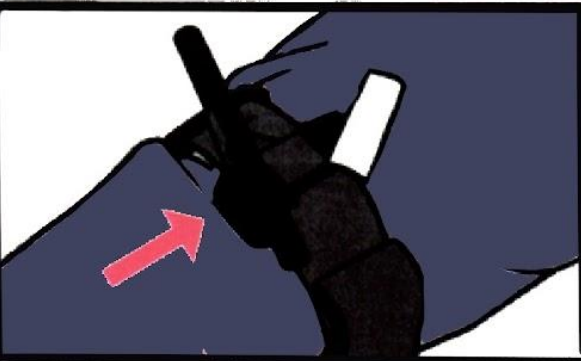
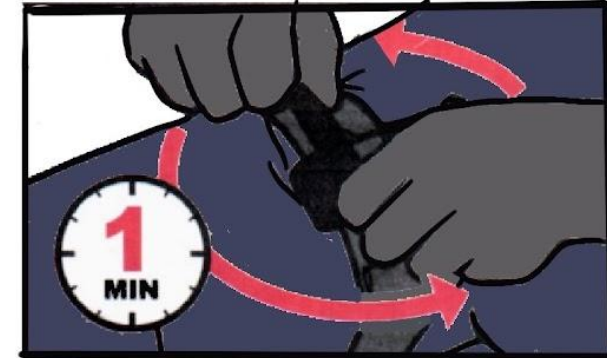
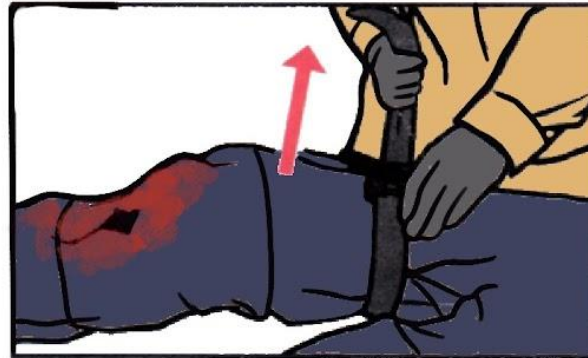
Pack

Seal

Tourniquet

Massive bleeding

- Compressible bleed
 - Tourniquet
 - Higher than wound
 - Not over knee or elbow



Massive bleeding

- Non compressible bleed
 - Haemostatic agent
 - Pack wound
 - Pressure over haemostatic for 3+ minutes
 - Send packaging with casualty



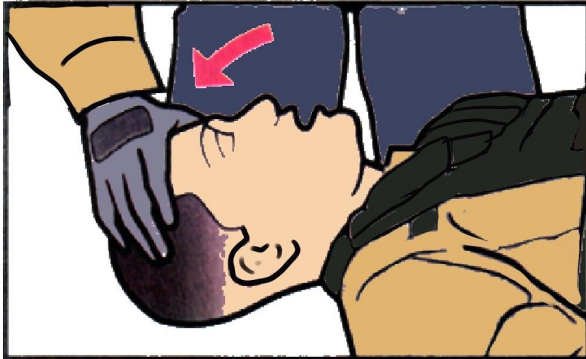
Severe Limb Trauma

- **Proximal Pressure**
- Brachial – Place hands around arm, halfway between shoulder and elbow. Squeeze until bleeding stops
- Femoral – Press on the “knicker line”. Press hard with thumbs until bleeding stops

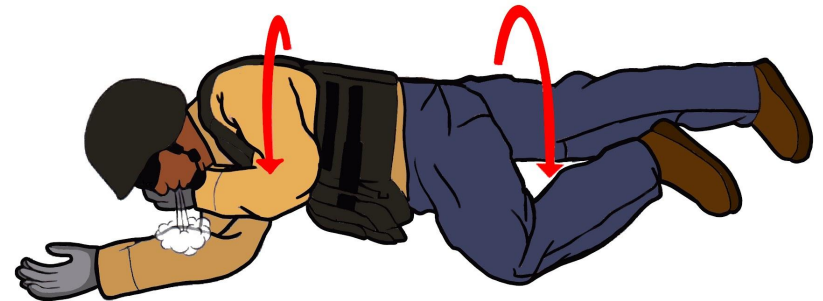
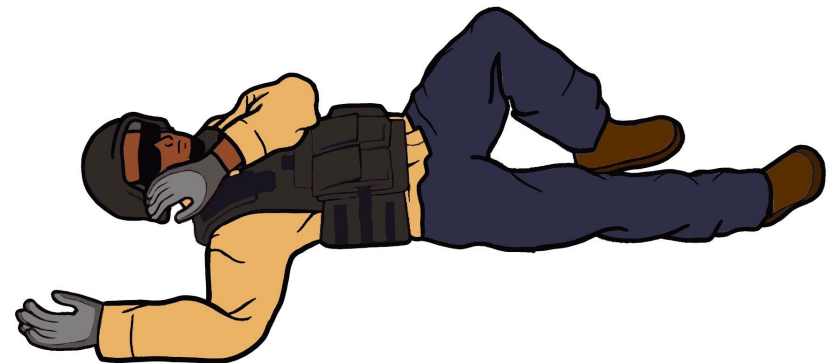
Airway Management

- Options:

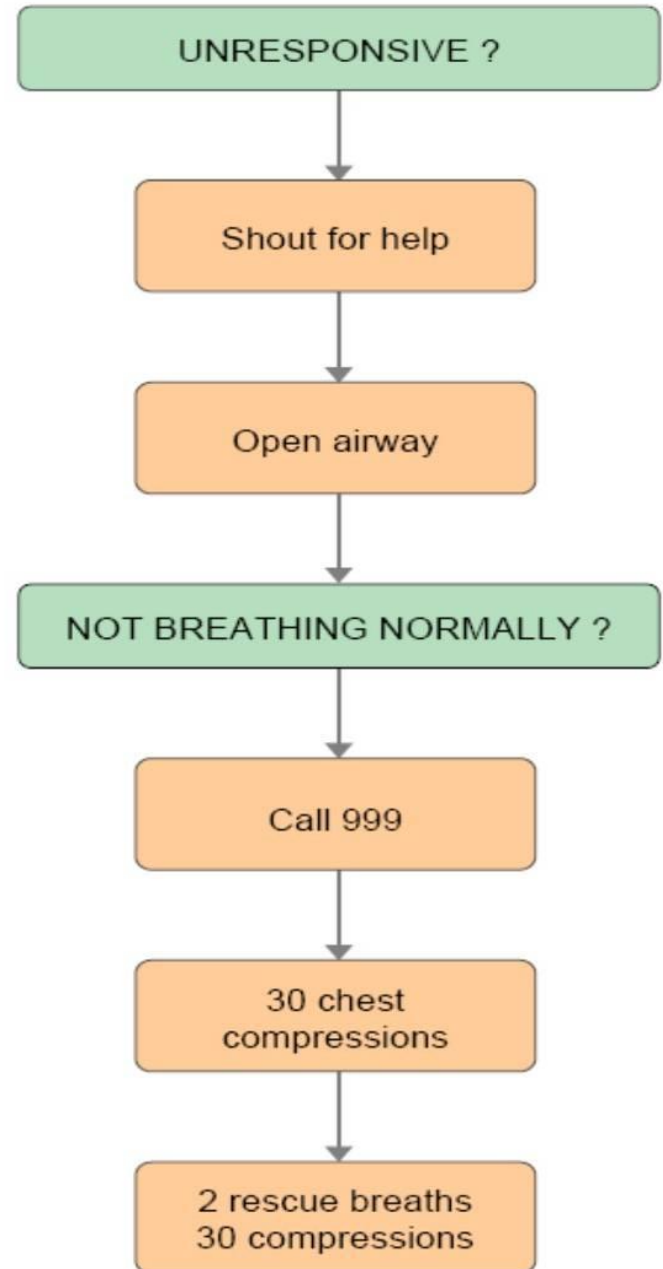
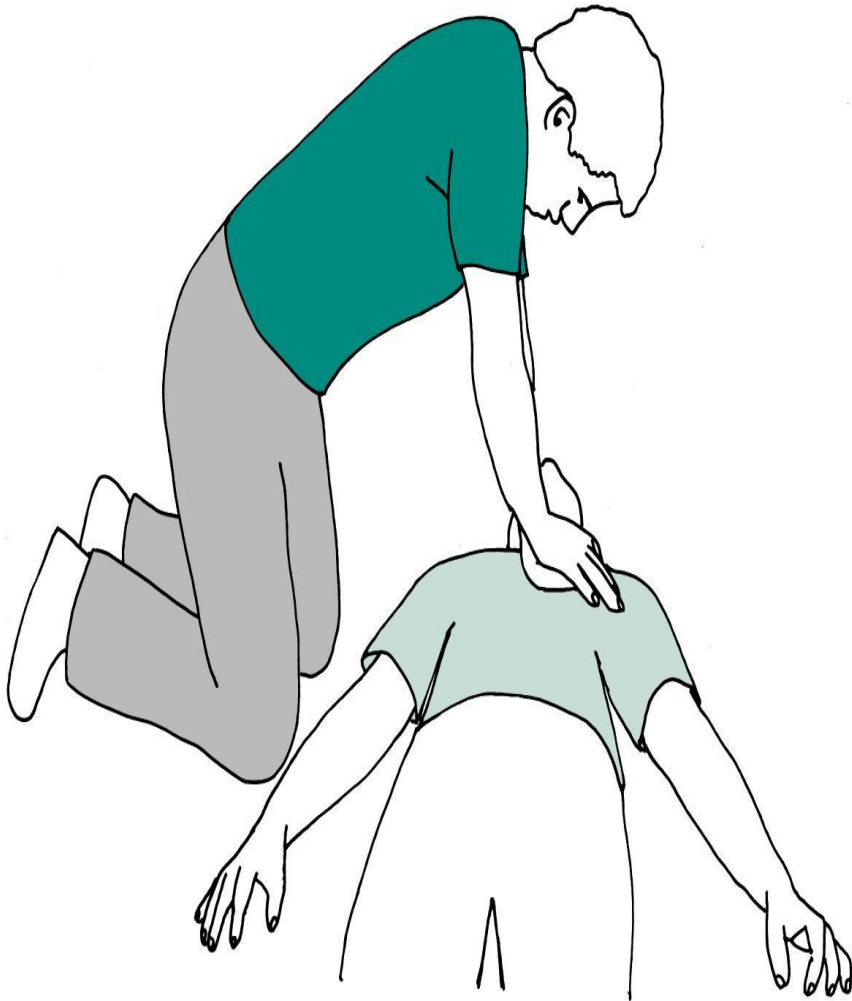
- Head tilt and chin lift -



- Recovery Position

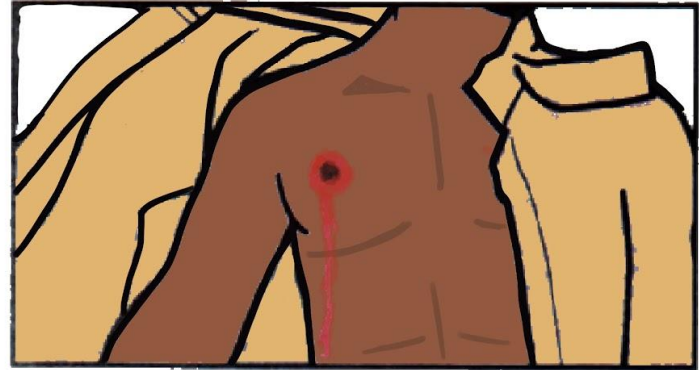


Pump & Blow



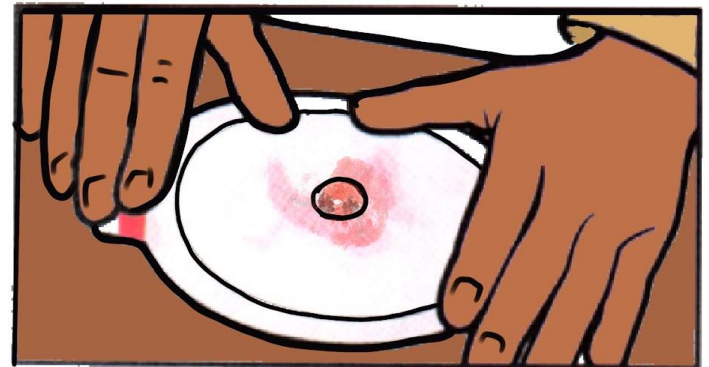
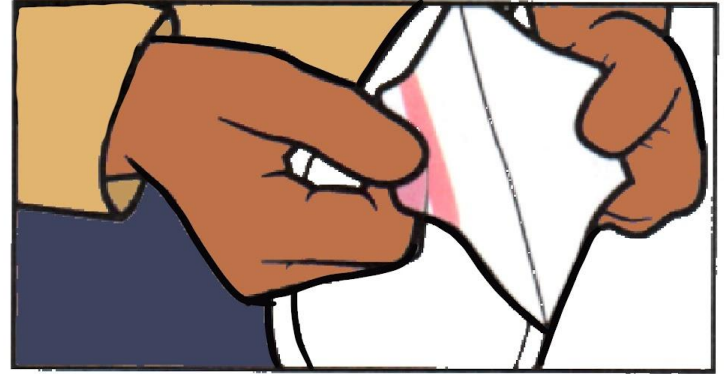
Chest Trauma

- Expose chest-
- Think FLASH
 - Feel
 - Look
 - Armpits
 - Search the back
 - Holes
- For open chest wound:
 - Seal hole with hand
 - Use chest seal if available



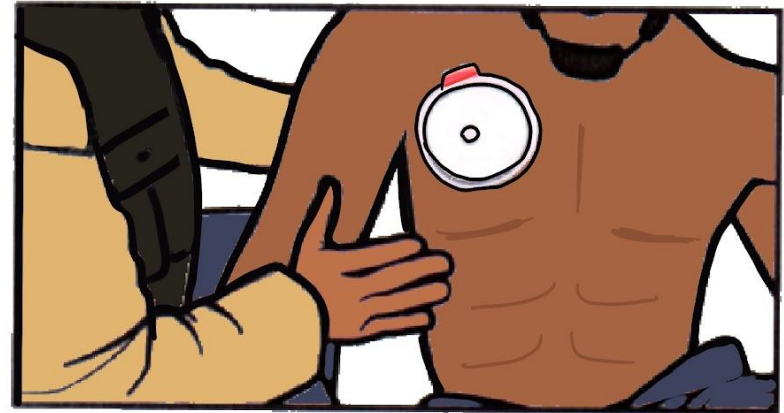
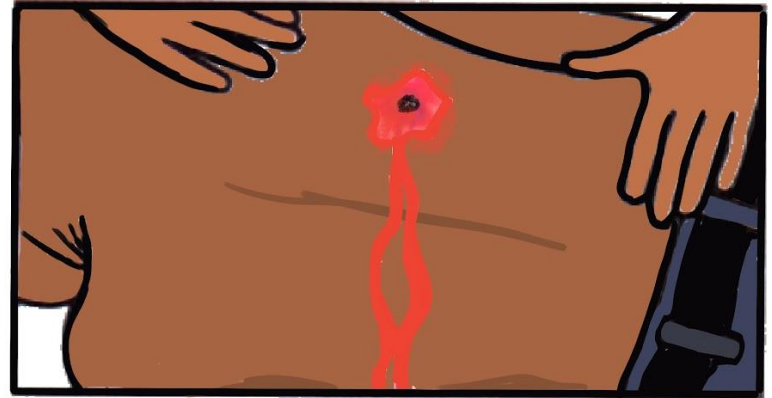
Chest Trauma

- Expose chest-
- Think FLASH
 - Feel
 - Look
 - Armpits
 - Search the back
 - Holes
- For open chest wound:
 - Seal hole with hand
 - Use chest seal if available



Chest Trauma

- Check back and sides
- Position to help breathing
- Re-assess; watch for
 - Increased breathing rate
 - Distended neck veins
- If needed “burp” the dressing

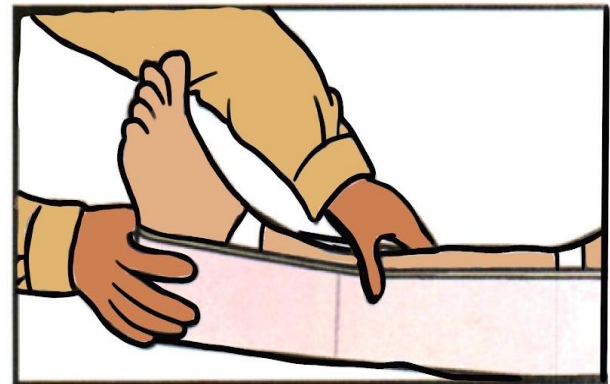
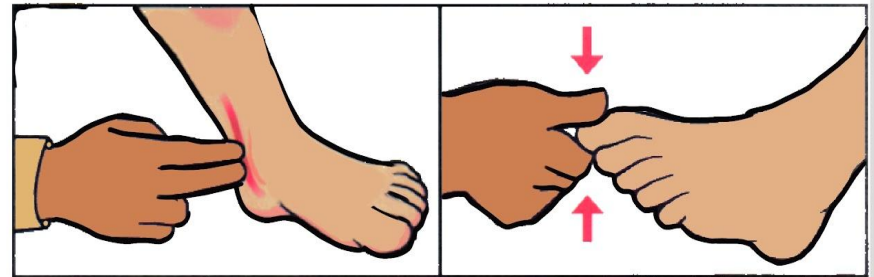
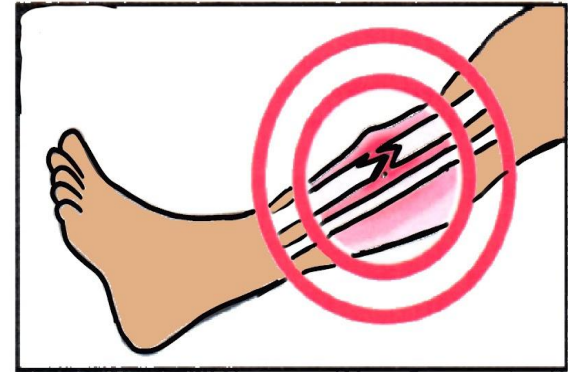


Blood sweep/check

- Rapid examination to find other wounds
- Check: CARTS-A
 - Chest
 - Abdomen/pelvis
 - Renal/kidneys- check the back
 - Thigh- legs
 - Skin- arms
 - Street-
 - Airway [recheck & check head]

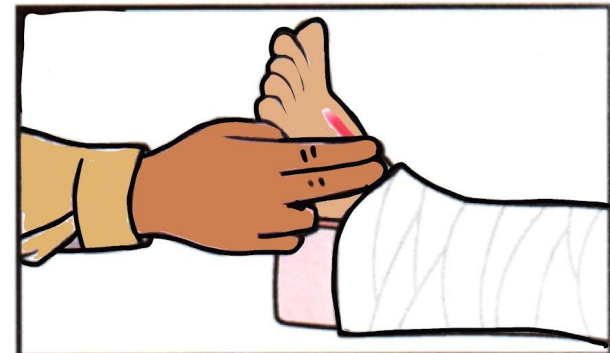
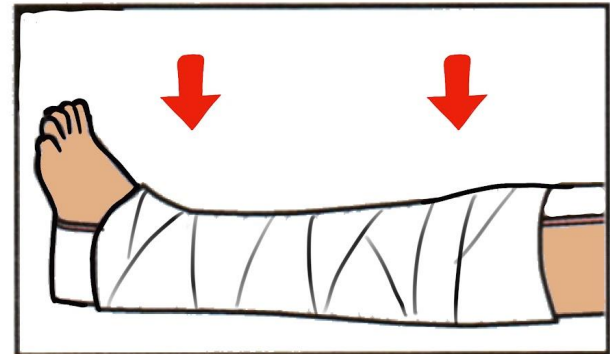
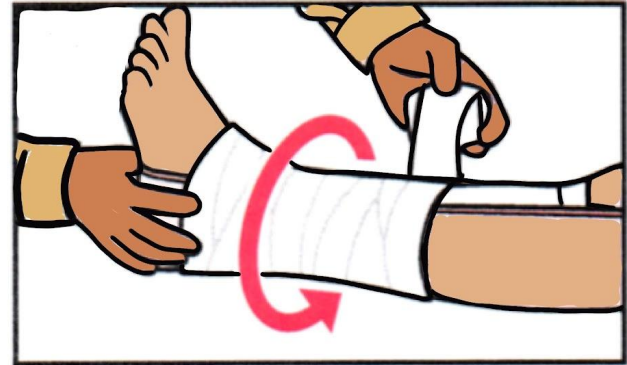
Fractured Limbs

- Stop any bleeding
- Support the limb to prevent further injury
- Check circulation
- Pad and strap for comfort
- “Bind it as you find it”



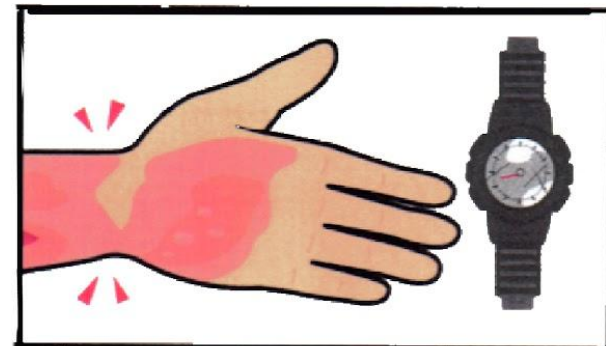
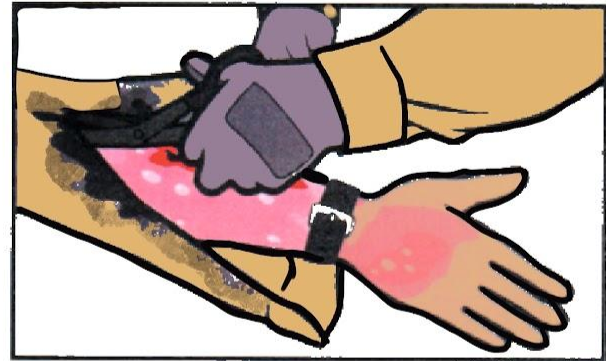
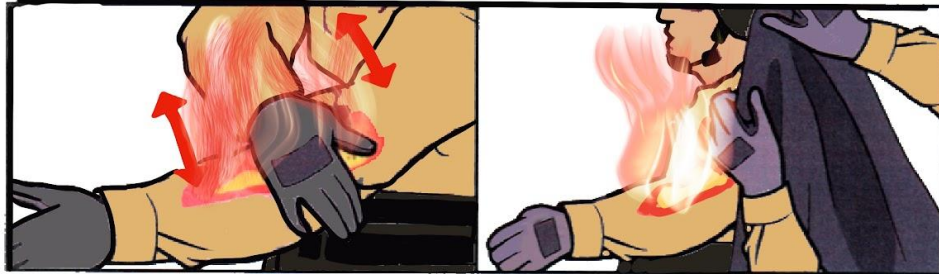
Fractured Limbs

- Stop any bleeding
- Support the limb to prevent further injury
- Straighten and splint limbs in prolonged casualty evacuation situations if no pulse
 - “Make it look right”
- Constant re-assessment of circulation to the extremities



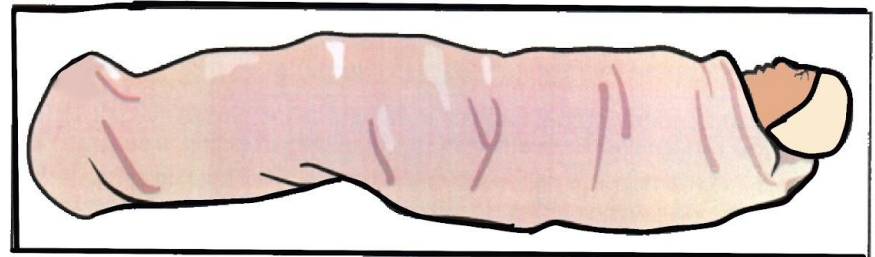
Burns Trauma

- Stop the burning
- Cool it – water for at least 10 minutes
- If chemicals cool for longer
- Remove loose burnt clothing
- If possible remove constrictive items



Burns Trauma

- Cover it – a light, clean, non-fluffy dressing
- Treat for shock – lie them down and keep warm
- Estimate the surface area burnt if possible
- The casualty's palm is 1% of their body surface area



Casualty Handover

AT MIST

- A- Age
- T- Time of incident
- M-Mechanism of Injury
- I-Injuries
- S- Signs & Symptoms
- T- treatment given or planned

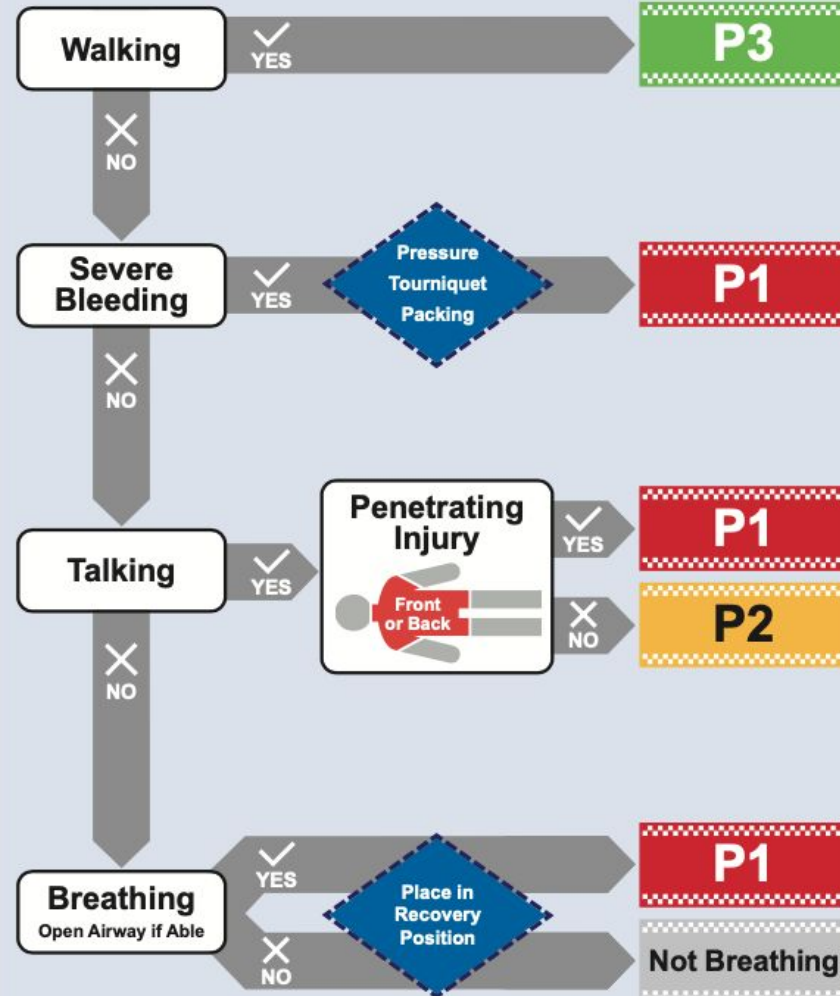
Vital Signs- CPRO-T

- C- Capillary refill
- P- Pulse
- R-Respiratory Rate
- O-Oximetry
- T- Temperature

WRITE IT DOWN

Triage

Ten Second Triage (TST)

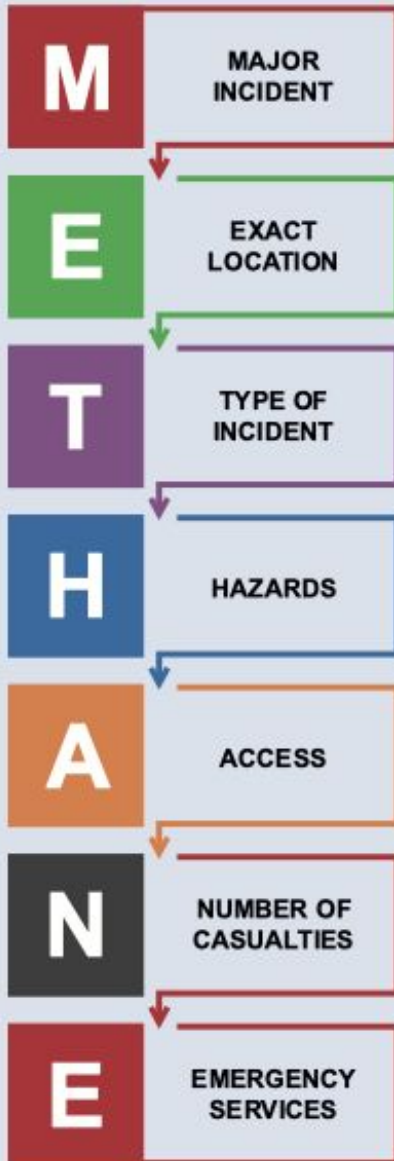


CPR if Resources Allow

Triage



Ten Second Triage (TST)



Ten Second Triage (TST) Tally Chart

P1	1	2	3	4	5	6	7	8	9	10
	11	12	13	14	15	16	17	18	19	20
P2	1	2	3	4	5	6	7	8	9	10
	11	12	13	14	15	16	17	18	19	20
P3	1	2	3	4	5	6	7	8	9	10
	11	12	13	14	15	16	17	18	19	20
Not Breathing	1	2	3	4	5	6	7	8	9	10
	11	12	13	14	15	16	17	18	19	20

www.lazarustraining.co.uk

